

FULGOR
MILANO



Collection Twelve

12



FULGOR
MILANO

SOFIA

PROFESSIONAL



POWERFUL ELEGANCE

Sofia is a solid, generously sized freestanding range with a clean and precise style. It was designed, developed and engineered in Italy to exceed all quality, performance and style expectations. Sofia will captivate the most discerning chef with nuanced traditional yet innovative features.

FULGOR
MILANO

SOFIA 48"

PRO INDUCTION WITH GRIDDLE

TRILAMINATE GRIDDLE

Functional and beautiful, our trilaminate griddle features a three-layer construction including 304 stainless on the cooking surface, an aluminum mid-layer for even heat distribution and another stainless layer on the bottom.

UNSURPASSED CRAFTSMANSHIP

Superior Italian steelmaking craftsmanship ensures perfectly polished edges and smooth corners, with concealed screws and welds for an impeccable finish.

COOL TOUCH DOOR

Four layers of thermo-reflecting glass ensure a cool touch door while the oven is on - even at its highest temperature during the self-clean cycle.

CONVENIENCE OVEN

Identical to its larger mate (except the meat probe), this self-cleaning, multi-function convection oven does everything in a smaller space, adding efficiency and flexibility.



SEVEN INDUCTORS

The cooking surface features seven powerful premium European inductors. There are five inductors under a continuous piece of ceramic glass. An integrated trilaminate griddle over a dedicated bridge element provides independent control of the front and back of the griddle or the entire burner when in bridge function.

DUAL OVENS

Two self-cleaning convection ovens with multiple baking functions give the ultimate flexibility, five inductors, performance and capacity. Telescoping chrome oven racks let you quickly check on dishes during cooking and help with effortless removal when done.

SOFT CLOSING DOOR

Robust stainless oven doors with wide viewing windows have an effortless soft close from our shock-absorbing hinges.

This masterfully designed 48" induction range is a first-of-a-kind all-electric pro range alternative for those who prefer a traditional 48" range configuration with the built-in griddle. If the griddle is not needed, it is easily removed, revealing usable induction elements below. Professional control knobs give precise control with the instantaneous response of induction cooking. Bake the way you want with two self-cleaning true convection ovens with intuitive multiple baking and broiling functions and convenient telescoping racks.

Create your personalized nameplate for the oven door.

FULGOR
MILANO



SOFIA 48" PRO INDUCTION ALL GLASS

Our elegantly designed 48" induction range is an all-electric pro range alternative for those without gas or who want an electric option. The beautifully designed cooking surface features seven powerful premium European inductors under continuous ceramic glass. It features our beloved 36" induction range configuration and a dedicated bridge element. Use the bridge function to combine both induction zones into one large zone for use with specialty cookware or an induction-capable griddle. Professional control knobs give precise control and instantaneous response of the inductor. Bake the way you want with two self-cleaning, true convection ovens with intuitive multiple baking and broiling functions with convenient telescoping racks.

FULGOR
MILANO

SOFIA

36" INDUCTION PRO SOFIA RANGE



The Sofia 36" Induction Pro Range features powerful premium induction technology under an elegant glass surface and the new 11" Dual Max Power burner. Professional control knobs give precise control and instantaneous response of the inductor.

The wide glass, cool touch door is equipped with a soft closing feature of the oven. The self-cleaning dual true convection oven offers an unsurpassed baking performance.

Sofia Induction Pro Ranges are available in 30" with four inductors, 36" with six and 48" with seven.

FULGOR
MILANO

48" DUAL FUEL

PRO SOFIA RANGE
THE ART OF COOKING EXPANDED

The thoughtfully designed 5 in 1 Crescendo burners have six positions beneath continuous cast iron grates and a Trilaminare Stainless Steel griddle. You will experience unparalleled power and control to melt, simmer, sauté, and sear. Bake the way you want with two self-cleaning, true convection ovens with intuitive multiple baking and broiling functions with telescoping racks.



48" DUAL FUEL

PRO SOFIA RANGE CHARACTERISTICS

TRILAMINATE GRIDDLE

Functional and beautiful, our trilaminate griddle features a three-layer construction: a 304 stainless steel cooking surface, an aluminum mid-layer for even heat distribution, and a stainless steel layer on the bottom.

UNSURPASSED CRAFTSMANSHIP

Superior Italian craftsmanship is seen in perfectly polished edges, smooth corners, and concealed screws and welds for an impeccable finish.

COOL TOUCH DOOR

Four layers of thermo-reflecting glass ensure a cool touch door while the oven is on - even at its highest temperature during the self-clean cycle.

CONVENIENCE OVEN

The convenience oven has identical features to its larger partner (except the meat probe). This self-cleaning, multifunction convection oven does everything in a smaller space, adding efficiency and flexibility. It even has a telescoping rack.



CAST IRON GRATES

Built to withstand searing heat and rapid temperature changes while maintaining strength, continuous cast iron assists in quickly repositioning pans.

SIX BURNERS

Six cooking zones, each with Crescendo Burners, create five levels of cooking power. The settings give the perfect combination of power and even heat distribution with precise results from tempering at 350 BTUs to searing at 20,000 BTUs. A combination of burner rings at different control levels related to the flame and the bottom of the cooking vessel gives a range of whisper-soft heat at low for melting up to ultra-high for searing and deglazing.

DUAL OVENS

Two self-cleaning convection ovens with multiple baking functions provide ultimate flexibility, performance, and capacity. Telescoping chrome oven racks let you quickly see dishes cooking and aid effortless removal.

SOFT CLOSING DOOR

Wide-view stainless steel oven doors with shock-absorbing hinges facilitate an effortless soft close.

FULGOR
MILANO

SOPIA 48" ALL GAS PRO SOPIA RANGE



Imagine all you can create with the generous 48" All Gas Sofia Pro Range. With six Crescendo burners and a trilaminare stainless steel griddle, the possibilities are endless. Cater to all your baking whims with two well-appointed gas ovens. The main 30" multifunction oven features a large internal cavity and our new Nova Broiler System – making the ultimate culinary experience within your reach.



TRILAMINARE GRIDDLE

Functional and beautiful, our trilaminare griddle features a three-layer construction, including 304 stainless steel on the cooking surface, an aluminum mid-layer for even heat distribution and another stainless steel layer on the bottom.



OVEN CONTROL

Sofia's digital control display lets you monitor temperature levels in the 30" oven.



ITALIAN CRAFTSMANSHIP

Superior Italian craftsmanship is seen in perfectly polished edges with smooth corners, concealed screws, and welds for an impeccable finish.



AUTOGRAPH YOUR KITCHEN

Visit the Fulgor Milano website to customize the oven nameplate with your name. The complimentary plate is delivered right to your home.



SOFIA

36" PRO RANGE

WITH GRIDDLE DUAL FUEL OR ALL GAS

The Sofia 36" dual fuel and all gas range with griddle features a thoughtfully designed cooking surface with four burners and a central griddle. Each burner features our five-in-one Crescendo Burner beneath our continuous heavy-duty cast-iron grates. The range has the same Trilaminare Stainless Steel Griddle as our 48" ranges, providing unparalleled flexibility in a 36" range. The Crescendo Burner can sear, sauté, boil, temper and simmer the most delicate dishes.

Below the cooking surface of the 36" dual fuel, you will find a large self-cleaning electric dual true convection oven. The oven has intuitive multiple baking and broiling functions and the convenience of a telescoping rack, giving you unlimited cooking possibilities.

The heart of the Sofia 36" All Gas Range is her dual convection oven and the Nova Broiler System's intense heat that sears meats perfectly, locking in juices. The large broiling area and the ventilation allow closed-door broiling to ensure a consistent cook.

Both ovens feature commercial-style racks, multi-level lighting, and a full-extension rack with stainless glides.

Customize your nameplate and choose an optional accessory color kit to create a truly personalized look.



COLOR KIT

PERSONALIZE WITH COLOR

FREEDOM TO CHOOSE COLOR



CANOVA
WHITE
MATTE WHITE
RAL 9016

BLACK
VELVET
MATTE BLACK
RAL 9004

RIALTO
GREY
MATTE GREY
RAL 9007 "SLATE"

GONDOLA
BLACK
GLOSSY BLACK
RAL 9004

VENETIAN
RED
GLOSSY RED
RAL 3003

PALLADIO
WHITE
GLOSSY WHITE
RAL 9016

Your cooking style is personal, and so is your kitchen. Why not personalize your kitchen with color? Dress Sofia in vibrant Venetian Red, brilliant Palladio White, glistening Gondola Black, sumptuous Black Velvet, gleaming Rialto Grey or delicate Canova White. With a Sofia Color Kit, making a color change is a breeze. Swap out the door and one-piece toe-kick whenever the mood strikes. Change the Sofia color every season, making your kitchen alive with color.

AUTOGRAPH YOUR KITCHEN

MAKE IT EXCLUSIVELY YOURS!



Customize your Sofia kitchen with your name and choice of font. Visit the Fulgor Milano website to create your personalized nameplate for the oven door. The complimentary plate is delivered to your home, making your unique Sofia kitchen exclusively yours.



FULGOR
MILANO

SOPIA

PRO GAS RANGETOP



Style and performance best describe the Sofia Professional Range Top. Combining the highest quality materials and thoughtfully designed technology delivers versatile and functional solutions. The sturdy stainless steel structure with heavy-duty continuous grates, a matte black burner basin, and modulating steel knobs of the Crescendo Gas Burners offer infinite cooking possibilities.

The Professional Gas Range Tops are available in 36" and 48" configurations with a trillaminate griddle and 30" and 36" configurations with four or six Dual Flame Crescendo Burners.

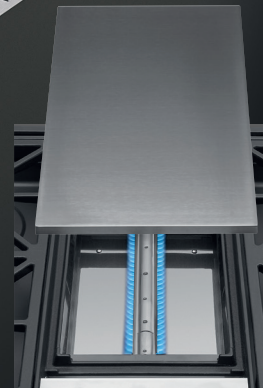
FULGOR
MILANO

SOFIA PRO GAS 48" RANGETOP

Discover all the features you would expect from a true professional-style cooktop.

CRESCENDO DUAL FLAME BURNERS

Six Crescendo Dual Flame Burners provide the perfect combination of power and evenly distributed heat. Achieve precise cooking results from whisper-soft heat for melting or rendering chocolate at 350 BTUs to ultra-high temperatures for searing and boiling with a maximum of 20,000 BTUs. The combination of inner and outer burner rings is easily controlled with the professional-style knobs.



TRILAMINATE GRIDDLE

Our trilaminated griddle is functional and beautiful. Two exterior layers of durable and easy-to-clean stainless steel and an aluminum core provide even and consistent heat distribution.



CAST IRON GRATES

Built to withstand searing heat and rapid temperature changes while maintaining strength, continuous cast iron grates allow pots and pans to be easily repositioned.



PORCELAIN BURNER BASIN

The elegant yet robust continuous grates sit atop the seamless, one-piece burner bowl. The burner bowl's smooth corners and velvet matte black porcelain finish make cleaning a breeze.

PRO 48" INDUCTION RANGETOP WITH GRIDDLE

The Sofia Induction Range Top features powerful premium induction technology under an elegant glass surface featuring a new 11" Dual Max Power burner (48" model). The Digital Minute Minder manages instantaneous response and precision control. Experience maximum performance while minimizing energy consumption.

The Professional Induction Range Top is available in 48" all glass and 48" with a trilaminate griddle model.

DUAL MAX POWER

Give large pans full power with consistent heat distribution while cooking. The 11" Dual Induction Zone offers a fifth burner for any size pan and power level for ultimate flexibility.

PROFESSIONAL STYLE KNOBS

Have total control over settings and functions with heavy-duty professional-style knobs. They are easy to use and remove for cleaning.

INDUCT. SPECIFIC ISLAND TRIM

We specifically designed an elegant low-profile island trim for our Sofia Induction Range Tops to match the profile of our Sofia control panel.



TRILAMINATE GRIDDLE

Our trilaminate griddle is functional and beautiful. Two exterior layers of durable and easy-to-clean stainless steel and an aluminum core provide even and consistent heat distribution.

SEVEN INDUCTORS

The cooking surface features seven robust premium European inductors. Five inductors are under a continuous piece of ceramic glass with the same configuration. It also includes an integrated trilaminate griddle over two independent inductors. Enjoy independent control of the front and back of the griddle cooking surface. Alternatively, bridge the two inductors for precise control with one knob.



FULGOR
MILANO

PRO 48" INDUCTION RANGETOP ALL GLASS

The cooking surface features seven robust premium European inductors under a continuous piece of ceramic glass, adding to the elegant design. This Sofia Professional Range Top includes a dedicated bridge element. With the bridge function, combine both induction zones into one large zone for use with specialty cookware or an induction-capable griddle. Professional control knobs provide an instant response with precise control.

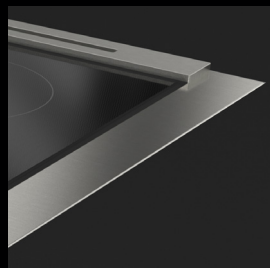
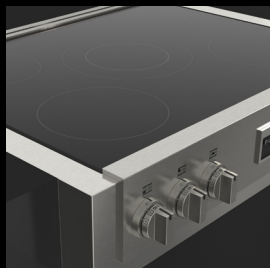


SOFIA

PRO INDUCTION 36" RANGETOP

The Sofia 36" Induction Professional Range features powerful premium induction technology under an elegant glass surface featuring the new 11" Dual Max Power Burner. The easy-to-use professional knobs adjust the instantaneous response and precise induction control. The wide glass, cool touch oven door has a soft closing feature. The self-cleaning dual true convection oven offers unsurpassed baking performance.

Sofia Induction Pro Ranges are available in 30" with four inductors, 36" with five, and 48" with seven.



DUAL MAX POWER

Give large pans full power with consistent heat distribution while cooking. The 11" Dual Induction Zone offers a fifth burner for any size pan at any power level for ultimate flexibility.

PROFESSIONAL STYLE KNOBS

Have total control over settings and functions with heavy-duty professional-style knobs. They are easy to use and remove for cleaning.

INDUCT. SPECIFIC ISLAND TRIM

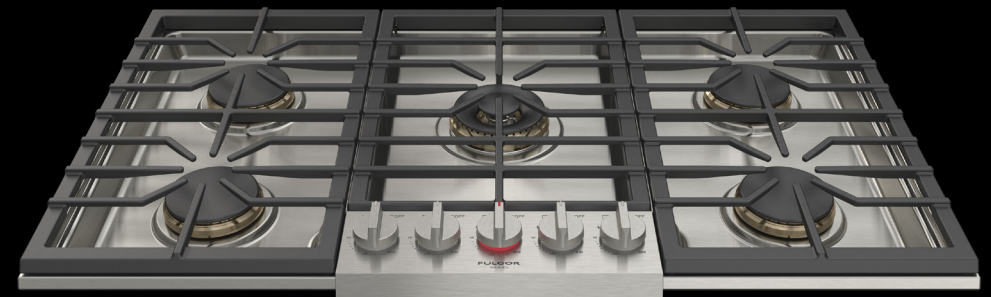
We specifically designed an elegant low-profile island trim for our Sofia Professional Induction Range Top to match the exact profile of our Sofia control panel.



FULGOR
MILANO

SOFIA

COOKTOP 36" PRO GAS



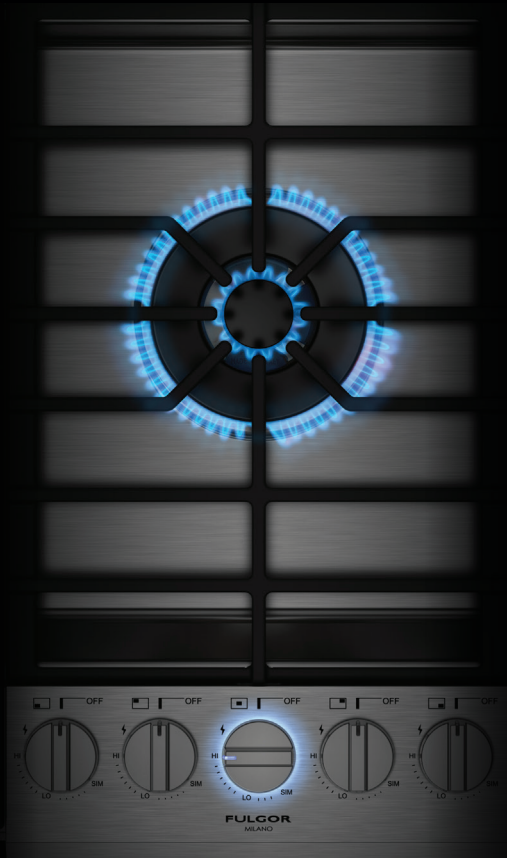
STRONG, POWERFUL, DISTINCTIVE

With sleek lines, a continuous surface grate over powerful brass burners, and LED illuminated controls, the Sofia Professional Cook Top combines elegant design, responsive performance, and thoughtful convenience. Sofia enters a new realm with this low-profile cooktop, offering design flexibility for your kitchen. Enjoy 20,000 BTU Dual Brass Burners in this Sofia cooktop while using the additional four Crescendo Dual Stack Burners, designed to surpass all your expectations. Get peace of mind at every turn with the new Halo Effect knobs that let you quickly see if the gas is on or if the cooktop was recently used. Continuous cast-iron grates offer an even cooking surface for quickly repositioning pans from burner to burner.

The Sofia Professional Cook Top is also available in the 30" size.

HALO VISION

HEAT MADE VISIBLE



HALO WHITE for gas usage identification

Whether searing a steak or tempering chocolate, the glowing halo of white light will indicate that a burner is on. The halo disappears once the burner is turned off. Never walk away from the cooktop again, wondering if the burner is active.

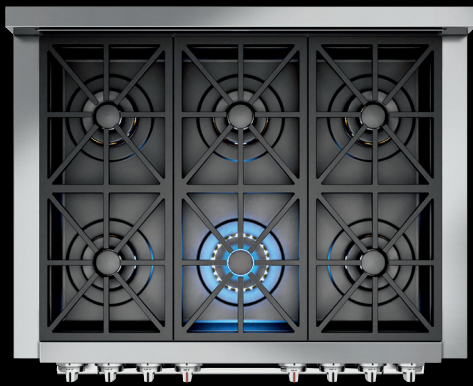


HALO RED residual heat indicator

A professional cooktop is complete with powerful burners and robust cast iron grates. Feel the strength of the burners as the cast iron grates continue to radiate heat, even after the burner is off. A red Halo light around the control knob will stay illuminated briefly, indicating that the burner was recently used.

5 in 1

CRESCENDO BURNER



Achieve precision control from powerful high to gentle, low flames with our sealed burners. They offer five combinations of flame configurations. Durable brass burner rings provide exceptional heat distribution to the base of the cooking vessel. You'll appreciate the wide range with a maximum output of 20,000 BTUs to the gentlest simmer aided by its oversized burner cap.



FORTE 1

Achieve your culinary conquests with burner rings, creating the most powerful flame for cooking. Use 20,000 BTUs of power to sear meat with a crust worthy of your favorite steak restaurant. Watch large pots quickly get to a vigorous boil.



MEZZOFORTE 2

Perfecting al dente pasta is a snap. Progressive burner control ensures maximum heat distribution without excessive flame for an even and moderate boil.



MEZZO 3

Creamy risotto and smooth custards come to life as the burner rings combine to provide enough heat to cook without scorching.



PIANOFORTE 4

Simmer, poach, or braise your favorite sauce, soup or stew. Flame curls around the diffuser cap, barely brushing the base of the cooking vessel with perfect control for extended periods of low heat.



PIANO 5

Melt butter, temper chocolate, or gently coax the flavor from savory vegetables. The simmer burner rolling gently under the diffuser cap achieves the lowest flame setting to radiate whisper-soft heat.



FULGOR
MILANO

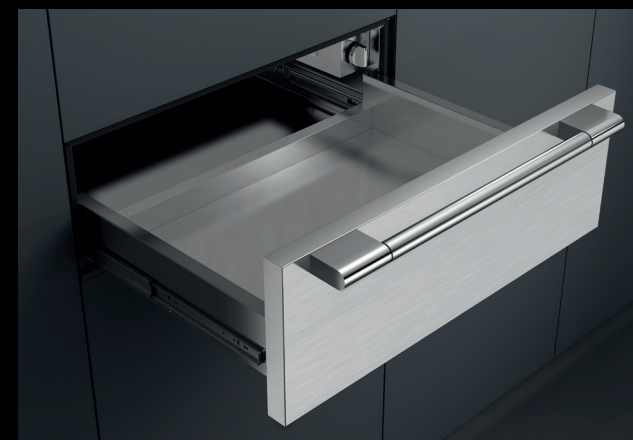
SOFIA

PROFESSIONAL 30" DOUBLE OVEN



WARMING DRAWER

The Sofia Professional Double Oven ensures you can expertly handle whatever culinary challenges come your way. You'll appreciate the striking beauty and bold performance, dual true convection, cool touch, soft-close doors, concealed bake elements, and multiple cooking modes. From defrosting to intensive broiling and everything in between, there is no cooking task this oven can't tackle. A meat probe in the upper oven ensures perfect results for your roasts. Self-clean helps each oven remain beautiful and functional throughout its life.



FULGOR
MILANO
SOFIA 30"

CUSTOMIZABLE TOWER OF POWER

Create the ultimate built-in tower by combining any of our specialty ovens or built-in coffee machines with our professional single oven and warming drawer. These specialty products are all designed to give you complete flexibility while maintaining a consistent look.



PRO STEAM OR SPEED OVEN

Choose between our combination steam oven or combination speed oven. Use the power and health benefits of steam cooking, or choose the convenience of reduced cooking times with our combination speed oven.

PRO OVEN

A self-cleaning convection oven with multiple baking functions provides ultimate flexibility and performance. Telescoping chrome oven racks let you quickly see dishes cooking and provide effortless removal.

WARMING DRAWER

More than a warming drawer, the possibilities are endless. This appliance can slow cook, proof, leaven, and defrost in its compact and fully enclosed space. Or use it as a warming drawer, holding dishes at serving temperature.



FULGOR
MILANO

SOFIA

30" SPECIALTY OVENS

SPEED OVEN

Complete your Sofia kitchen with our combi-speed oven – a must for a premium kitchen. Enjoy the benefits of speed cooking by using the oven to microwave, bake, broil, or any combination of cooking modes.

STEAM OVEN

Complete your Sofia kitchen with our steam oven. The possibilities of cooking with a steam oven are endless. Steam, bake, broil, or use any combination of cooking modes to achieve healthy and great-tasting food.

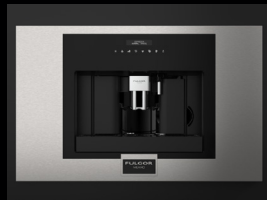


FULGOR
MILANO

SOFIA

30" PRO COFFEE MACHINE

Enjoy barista-style coffee such as espresso, cappuccino or your favorite Americano at the touch of a button. Our Italian-manufactured professional unit is easy to use, stores coffee beans, grinds beans for fresh grounds, brews your coffee, and automatically stores puck-grounds in the waste tray. Shown here with our unique 30" Pro Frame Kit, the espresso maker perfectly matches our other 30" Sofia built-in products. It is the perfect complement to your Fulgor Milano kitchen.



EASY TO USE TOUCH CONTROL

Enjoy all the features of our espresso maker, including adjusting the cup size, coffee strength, auto cappuccino mode, hot water dispenser, auto-start mode, auto-off mode, temperature customization, empty grounds and fill water tank messages, multi-lingual LCD, clock, etc.

30" PRO-STYLE FRAME KIT

We offer two sizes. Our automatic built-in coffee machines come standard in a 24" black glass or 24" stainless finish. Additionally, an optional 30" professional-style frame kit is available. This unique frame kit enables installation with other 30" Fulgor Milano built-in products. Put your finishing touch on the front with the I pro badge.

EASY MAINTENANCE

All automatic built-in coffee machines need regular cleaning and maintenance. Our unit has a dishwasher-safe waste tray and an easily removable water tank. A removable water tank (instead of it being plumbed) lets you add fresh water daily. Fresh water is essential to freshly ground beans for the best-tasting coffee. (Plumbed units cannot guarantee this.)

FULGOR
MILANO

SOPIA

PREMIUM BUILT-IN REFRIGERATION & WINE

COLD TEMP. TOTAL CONTROL

Beautiful and functional, the Sofia Professional Refrigeration and Wine Series features brushed stainless exteriors for maximum impact and a brilliant white aluminum interior. Because food preservation is critical, we combine the latest technology to ensure the highest performance. Dual compressors provide independently controlled cooling zones with consistent and precise temperatures throughout, ensuring that the finest foods and wines stay fresher longer. Robust doors on the refrigerator and triple-layer UV-protected glass in the Wine Cellar protect contents from external temperature and humidity changes, which can damage stored items.



Fulgor Milano now features a full line of premium built-in columns for food and wine preservation. Completely customize your experience with various sizes and configurations of refrigeration, freezer and wine columns.

FRIDGE, FREEZER & WINE COLUMNS

TWO UNIQUE STYLES

Our columns are available in two configurations: custom overlay and clad stainless steel with a matching pro handle. There are two options: camouflage these beautiful units entirely into your kitchen design with overlay matching panels or the elegant stainless finish to match your Sofia Range.

COLUMNS ENDLESS POSSIBILITIES

Unlimited options: Combine as many or as few units as you want. Your kitchen design may call for stand-alone units to bookend a galley or combine as many units as you wish for the ultimate preservation system. Our unique hinge design allows multiple units to be installed together, ensuring proper door swing and a minimal tolerance for adjacent units and cabinets.

SPACIOUS AND DURABLE

Fulgor Milano columns are built to last. Each unit is designed and made in Italy using commercial-style techniques and materials. The elegant and vibrant metal interior features LED lighting, which is both efficient and effective, full extension stainless steel crisper drawers, stainless steel refrigeration hardware and full metal drawers in the freezer.



The Fulgor Milano freestanding counter depth French-door unit interior features an internal water dispenser, adjustable fresh zone drawer, tri-level slide-out freezer baskets and self-closing freezer drawer.

FRENCH DOOR REFRIGERATOR

COUNTER-DEPTH STYLE

Limited on space and can't fit a full-height built-in fridge, or do you want a beautiful kitchen without capping the budget? Our Fulgor Milano counter-depth refrigerator achieves a luxury aesthetic without compromise.



PRO HANDLE KIT

Once the Pro Handle Kit with Pro Fulgor Milano badge is installed, our counter-depth French door refrigerator perfectly complements our professional ranges or built-in cooking appliances.





FULGOR
MILANO

SOFIA

PRO VENTILATION

Complete your powerful Sofia cooking suite with a matching wall-mounted ventilation hood to free your kitchen from smoke, cooking residue, and excess heat. In sturdy housing, the dual motor combines with Pro Baffle filters to whisk away the residuals of your culinary adventures quietly. Fresh air circulates freely in your home, while overhead LED illumination highlights your Sofia cooking surface evenly. The hood is controlled with professional control knobs. With its luxury aesthetic, Sofia's ventilation hoods offer the very best of function and design. Your well-ventilated kitchen will thank you for it!

48" HOOD



48" CHIMNEY HOOD





DUAL FUEL RANGE 48"

6 Dual-Flame Crescendo Burners
Trilaminare Stainless Steel Griddle
3 Heavy Duty, continuous cast iron grates
Dual True Convection ovens
Cool to the touch, soft closing door
Self-cleaning with Multifunction baking

CODE ID **F6PDF486GS1**



DUAL FUEL RANGE 36" GRIDDLE

4 Dual-Flame Crescendo Burners
2 Heavy Duty, continuous cast iron grates
Trilaminare Stainless Steel Griddle
Dual True Convection oven
Cool to the touch, soft closing door
Self-cleaning with Multifunction baking

CODE ID **F6PDF364GS1**



DUAL FUEL RANGE 36"

6 Dual-Flame Crescendo Burners
3 Heavy Duty, continuous cast iron grates
Dual True Convection oven
Cool to the touch, soft closing door
Self-cleaning with Multifunction baking

CODE ID **F6PDF366S1**



DUAL FUEL RANGE 30"

4 Dual-Flame Crescendo Burners
2 Heavy Duty, continuous cast iron grates
Dual True Convection oven
Cool to the touch, soft closing door
Self-cleaning with Multifunction baking

CODE ID **F6PDF304S1**



ALL GAS RANGE 48"

6 Dual-Flame Crescendo Burners
Trilaminare Stainless Steel Griddle
3 Heavy Duty, continuous cast iron grates
Double Dual Convection Gas Ovens
Oven temperature electronic control
Cool to the touch, soft closing door

CODE ID **F6PGR486GS2**



ALL GAS RANGE 36" GRIDDLE

4 Dual-Flame Crescendo Burners
2 Heavy Duty, continuous cast iron grates
Trilaminare Stainless Steel Griddle
Dual Convection oven
Nova Broiler System
Cool to the touch - Soft closing door

CODE ID **F6PGR364GS2**



ALL GAS RANGE 36"

6 Dual-Flame Crescendo Burners
3 Heavy Duty, continuous cast iron grates
Dual Convection oven
Oven temperature electronic control
Nova Broiler System
Cool to the touch - Soft closing door

CODE ID **F6PGR366S2**



ALL GAS RANGE 30"

4 Dual-Flame Crescendo Burners
2 Heavy Duty, continuous cast iron grates
Dual Convection oven
Oven temperature electronic control
Nova Broiler System
Cool to the touch - Soft closing door

CODE ID **F6PGR304S2**



GAS RANGE TOP 48"

6 Dual-Flame Crescendo Burners
Trilaminare Stainless Steel Griddle
3 Heavy Duty, continuous cast iron grates
2 X 20k BTU Max (NG)
4 X 18k BTU Max (NG)
1 X 11.500K BTU max (NG) Griddle

CODE ID **F6GRT486GS1**



GAS RANGE TOP 36" GRIDDLE

4 Dual-Flame Crescendo Burners
Trilaminare Stainless Steel Griddle
2 Heavy Duty, continuous cast iron grates
2 X 20k BTU Max (NG)
2 X 18k BTU Max (NG)
Natural Gas (LP convertible)

CODE ID **F6GRT364GS1**



GAS RANGE TOP 36"

6 Dual-Flame Crescendo Brass Burners
3 Heavy Duty, continuous cast iron grates
One piece, matte finish porcelain burner bowl
2 X 20k BTU Max (NG)
4 X 18k BTU Max (NG)
Natural Gas (LP convertible)

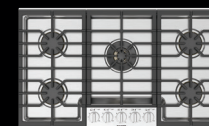
CODE ID **F6GRT366S1**



GAS RANGE TOP 30"

2 Heavy Duty, continuous cast iron grates
One piece, matte finish porcelain burner bowl
4 Dual-Flame Crescendo Brass Burners
1 X 20,000 BTU Max (NG)
3 X 18,000 BTU Max (NG)
Natural Gas (LP convertible)

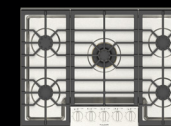
CODE ID **F6GRT304S1**



PRO GAS COOKTOP 36"

3 Heavy duty continuous cast iron grates
Heavy Gauge 304 Stainless Steel Bowl
1 Brass Dual Flame Burner 20K BTU Max (NG)
4 Brass Stacked Burners 15K BTU Max (NG)
Halo Vision - Backlit Control Knobs
Heavy duty control panel - Large cooking are

CODE ID **F6PGK365S1**



PRO GAS COOKTOP 30"

3 Heavy duty continuous cast iron grates
Heavy Gauge 304 Stainless Steel Bowl
1 Brass Dual Flame Burner 20K BTU Max (NG)
2 Brass Semirapid Burners 8K BTU Max (NG)
2 Brass Semirapid Burners 6.3K BTU Max (NG)
Halo Vision - Backlit Control Knobs

CODE ID **F6PGK305S2**



INDUCTION RANGE 48"

Knob Controlled
 4 Single Induction cooking zones
 1 Dual Max Power with Ø 11" zone
 1 integrated trillaminare Griddle over a dedicated 2-zone bridge element
 Self-cleaning, Dual True Convection ovens
 Cool to the touch, soft closing door

CODE ID **F6PIR485GS1**



INDUCTION RANGE 48"

Knob Controlled
 4 Single Induction cooking zones
 1 Dual Max Power with Ø 11" zone
 1 dedicated 2-zone bridge element
 Self-cleaning, Dual True Convection ovens
 Cool to the touch, soft closing door

CODE ID **F6PIR487S1**



INDUCTION RANGE 36"

4 Single Induction cooking zones
 1 Dual Max Power with Ø 11" zone
 Dual True Convection oven
 Cool to the touch, soft closing door
 Self-cleaning with Multifunction baking

CODE ID **F6PIR365S1**



INDUCTION RANGE 30"

4 Single Induction cooking zones
 Elegant Ceramic glass surface
 Dual True Convection oven
 Cool to the touch, soft closing door
 Self-cleaning with Multifunction baking

CODE ID **F6PIR304S1**



INDUCTION RANGE TOP 48"

4 Single Induction cooking zones
 1 Dual Max Power with Ø 11" zone
 1 integrated trillaminare Griddle over a dedicated 2-zone bridge element
 Residual heat and Power on Indicators
 Digital Display for Power Level

CODE ID **F6IRT485GS1**



INDUCTION RANGE TOP 48"

4 Single Induction cooking zones
 1 Dual Max Power with Ø 11" zone
 1 dedicated 2-zone bridge element
 Residual heat and Power on Indicators
 Digital Display for Power Level

CODE ID **F6IRT487S1**



INDUCTION RANGE TOP 36"

4 Single Induction cooking zones
 1 Dual Max Power with Ø 11" zone
 Booster function for each cooking zone
 Residual heat and Power on Indicators
 Digital Display for Power Level

CODE ID **F6IRT365S1**



INDUCTION RANGE TOP 30"

4 Single Induction cooking zones
 Elegant Ceramic glass surface
 Booster function for each cooking zone
 Residual heat and Power on Indicators
 Digital Display for Power Level

CODE ID **F6IRT304S1**



DOUBLE OVEN 30"

Knob and electronic controls
 Dual True Convection - 3 Halogen lights
 Self-cleaning oven with Multifunction baking
 Cool to the touch, soft closing door
 Extra-large baking cavity and viewing area
 Gross capacity 4.4 cu. ft. per oven

CODE ID **F6PDP30S1**



SINGLE OVEN 30"

Knob and electronic controls
 Dual True Convection - 3 Halogen lights
 Self-cleaning oven with Multifunction baking
 Cool to the touch, soft closing door
 Extra-large baking cavity and viewing area
 Gross capacity 4.4 cu. ft.

CODE ID **F6PSP30S1**



WARMING DRAWER 30"

Heavy Duty full extendable telescopic rails
 Convection heating system
 All stainless steel structure
 Warming Temp. range; 86 °F - 190 °F
 Slow closing assistance
 Large capacity - 2 Internal lights

CODE ID **F6PWD30S1**



SPEED OVEN 30"

3 in 1 Oven - Microwave, Convection, and Combi
 Stainless Interior with broiler
 Quick Access Menu
 Automatic Programs

CODE ID **F6PSPD30S1**



STEAM OVEN 30"

3 in 1 Oven - Steam, Convection, and Combi-steam
 Stainless Interior with broiler
 Quick Access Menu
 Automatic Programs
 Meat Probe

CODE ID **F6PSCO30S1**



BUILT-IN COFFEE MACHINE 30"

30" Pro Style Frame Kit
 Whole Bean Coffee Grinder
 Dual Boiler, Dual Dispensing Spouts
 Coffee/Esspresso Brewing
 Cappuccino Option
 Frothing System / Hot Water Dispenser

CODE ID **F7BC24B1 + F6PTK30BC**



PROFESSIONAL HOOD 48"

Scotch brite stainless steel (AISI 430)
Heavy Duty Control Panel with Knobs
Double fan motors - 1000 CFM
4 + 4 Speed - Mechanical Control
LED lighting Led 6 x - 3200 K
Baffle filter

CODE ID **F6PH48DS1**



PROFESSIONAL HOOD 36"

Scotch brite stainless steel (AISI 430)
Heavy Duty Control Panel with Knobs
Double fan motors - 1000 CFM
4 + 4 Speed - Mechanical Control
LED lighting - Led 4x - 3200 K
Baffle filter

CODE ID **F6PH36DS1**



PROFESSIONAL HOOD 30"

Scotch brite stainless steel (AISI 430)
Heavy Duty Control Panel with Knobs
One fan motor - CFM max 600
4 Speed - Mechanical Control
LED lighting: Led 4x1.2 W - 3200 K
Baffle filter

CODE ID **F6PH30S2**



PRO CHIMNEY HOOD 48"

Scotch Brite Stainless Steel (AISI 430)
3 Knobs Control
Double fan motors - 1000 CFM
Baffle Filter
6 LED lighting

CODE ID **F6PC48DS1**



PRO CHIMNEY HOOD 36"

Scotch Brite Stainless Steel (AISI 430)
3 Knobs Control
Double fan motors - 1000 CFM
Baffle Filter
4 LED lighting

CODE ID **F6PC36DS1**



INSERT HOOD 48"

Scotch brite stainless steel (AISI 430)
Heavy Duty Control Panel with Knobs
Double fan motors - 1000 CFM
4 + 4 Speed - Mechanical Control
LED lighting: Led 6x1.2 W - 3200 K
Baffle filter

CODE ID **F6BP46DS1**



INSERT HOOD 36"

Scotch brite stainless steel (AISI 430)
Heavy Duty Control Panel with Knobs
Double fan motors - 1000 CFM
4 + 4 Speed - Mechanical Control
LED lighting: Led 4x1.2 W - 3200 K
Baffle filter

CODE ID **F6BP34DS1**



WINE CELLAR 24"

Wine Cellar - 36 bottles
Cave Storage - 18 bottles
TriplePlay Refrigeration
Total No Frost
Flexzone Bottom Drawer
Brilliant white aluminium interior
LED Lighting

CODE ID **F7PBW24S1-R** (R DOOR)

CODE ID **F7PBW24S1-L** (L DOOR)



FRIDGE 36"

Fridge Compartment
Flexzone Bottom Drawer
Total No Frost
Stainless Steel Crisper Drawers
Ice Maker with ice tray
Brilliant white aluminium interior
LED Lighting

CODE ID **F7PBM36S1-R** (R DOOR)

CODE ID **F7PBM36S1-L** (L DOOR)



FRENCH DOOR FRIDGE 36"
with PROFESSIONAL HANDLE KIT

Duo Cycling Cooling / Ion Fresh
Inner Digital Display, Sabbath Mode
Large Pantry Drawer
Height Adjustable Cantilever Shelves
Interior Filtered Water Dispenser
Interior Theatre Lighting with LED lights
Automatic Ice Machine

CODE ID **F6FBM36S2** +

F6HK36FFBS

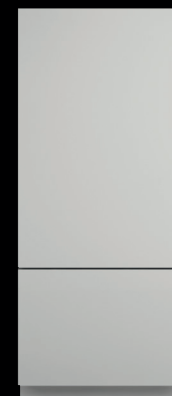


BUILT-IN WINE CELLAR 24"

Wine Cellar - 36 bottles
Cave Storage - 18 bottles
TriplePlay Refrigeration
Total No Frost
Flexzone Bottom Drawer
Brilliant white aluminium interior
LED Lighting

CODE ID **F7IBW24O1-R** (R DOOR)

CODE ID **F7IBW24O1-L** (L DOOR)



BUILT-IN FRIDGE 36"

Fridge Compartment
Flexzone Bottom Drawer
Total No Frost
Stainless Steel Crisper Drawers
Ice Maker with ice tray
Brilliant white aluminium interior
LED Lighting

CODE ID **F7IBM36O1-R** (R DOOR)

CODE ID **F7IBM36O1-L** (L DOOR)



36" FRIDGE COLUMN
with PROFESSIONAL HANDLE KIT

Stainless Steel Exterior
Microbeaded stainless steel crispers
drawers with soft closing
Height adjustable glass shelves
Luminous white interior
Multilevel LED lighting

CODE ID **F7SRC36S1-R** (R DOOR)
CODE ID **F7SRC36S1-L** (L DOOR)

30" FRIDGE COLUMN
with PROFESSIONAL HANDLE KIT

Stainless Steel Exterior
Microbeaded stainless steel crispers
drawers with soft closing
Height adjustable glass shelves
Luminous white interior
Multilevel LED lighting

CODE ID **F7SRC30S1-R** (R DOOR)
CODE ID **F7SRC30S1-L** (L DOOR)

24" FRIDGE COLUMN
with PROFESSIONAL HANDLE KIT

Stainless Steel Exterior
Microbeaded stainless steel crispers
drawers with soft closing
Height adjustable glass shelves
Luminous white interior
Multilevel LED lighting

CODE ID **F7SRC24S1-R** (R DOOR)
CODE ID **F7SRC24S1-L** (L DOOR)

30" FREEZER COLUMN
with PROFESSIONAL HANDLE KIT

Stainless Steel Exterior
Total No Frost
Height adjustable glass shelves
Metal freezer bins on stainless steel glides
Ice maker with ice tray
Luminous white interior
Multilevel LED lighting

CODE ID **F7SFC30S1-R** (R DOOR)
CODE ID **F7SFC30S1-L** (L DOOR)

24" FREEZER COLUMN
with PROFESSIONAL HANDLE KIT

Stainless Steel Exterior
Total No Frost
Height adjustable glass shelves
Metal freezer bins on stainless steel glides
Ice maker with ice tray
Luminous white interior
Multilevel LED lighting

CODE ID **F7SFC24S1-R** (R DOOR)
CODE ID **F7SFC24S1-L** (L DOOR)

18" FREEZER COLUMN
with PROFESSIONAL HANDLE KIT

Stainless Steel Exterior
Total No Frost
Height adjustable glass shelves
Metal freezer bins on stainless steel glides
Ice maker with ice tray
Luminous white interior
Multilevel LED lighting

CODE ID **F7SFC18S1-R** (R DOOR)
CODE ID **F7SFC18S1-L** (L DOOR)



36" FRIDGE COLUMN

Panel Ready Exterior
Microbeaded stainless steel crispers
drawers with soft closing
Height adjustable glass shelves
Luminous white interior
Multilevel LED lighting

CODE ID **F7IRC36O1-R** (R DOOR)
CODE ID **F7IRC36O1-L** (L DOOR)

30" FRIDGE COLUMN

Panel Ready Exterior
Microbeaded stainless steel crispers
drawers with soft closing
Height adjustable glass shelves
Luminous white interior
Multilevel LED lighting

CODE ID **F7IRC30O1-R** (R DOOR)
CODE ID **F7IRC30O1-L** (L DOOR)

24" FRIDGE COLUMN

Panel Ready Exterior
Microbeaded stainless steel crispers
drawers with soft closing
Height adjustable glass shelves
Luminous white interior
Multilevel LED lighting

CODE ID **F7IRC24O1-R** (R DOOR)
CODE ID **F7IRC24O1-L** (L DOOR)

30" FREEZER COLUMN

Panel Ready Exterior
Total No Frost
Height adjustable glass shelves
Metal freezer bins on stainless steel glides
Ice maker with ice tray
Luminous white interior
Multilevel LED lighting

CODE ID **F7IFC30O1-R** (R DOOR)
CODE ID **F7IFC30O1-L** (L DOOR)

24" FREEZER COLUMN

Panel Ready Exterior
Total No Frost
Height adjustable glass shelves
Metal freezer bins on stainless steel glides
Ice maker with ice tray
Luminous white interior
Multilevel LED lighting

CODE ID **F7IFC24O1-R** (R DOOR)
CODE ID **F7IFC24O1-L** (L DOOR)

18" FREEZER COLUMN

Panel Ready Exterior
Total No Frost
Height adjustable glass shelves
Metal freezer bins on stainless steel glides
Ice maker with ice tray
Luminous white interior
Multilevel LED lighting

CODE ID **F7IFC18O1-R** (R DOOR)
CODE ID **F7IFC18O1-L** (L DOOR)



24" WINE CELLAR COLUMN
with PROFESSIONAL HANDLE KIT

Stainless Steel Exterior
Two temperature zones
12 Natural wood shelves for 80 bottle total storage capacity
Luminous white interior
Multilevel LED lighting

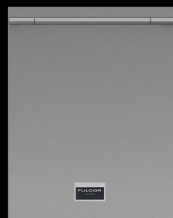
CODE ID **F7SWC24S1-R** (R DOOR)
CODE ID **F7SWC24S1-L** (L DOOR)



24" WINE CELLAR COLUMN

Panel Ready Exterior
Two temperature zones
12 Natural wood shelves for 80 bottle total storage capacity
Luminous white interior
Multilevel LED lighting

CODE ID **F7IWC24O1-R** (R DOOR)
CODE ID **F7IWC24O1-L** (L DOOR)



S. STEEL BUILT-IN DISHWASHER 24"
with PROFESSIONAL HANDLE KIT

16 Place Settings / 6 Programs
45 dBA Silent Operations
Flexible Rack Loading
All-In-One single tablet Detergent Function
Fast Function, 5 Level Wash
Flow Through Heater
3 way Euro Filtering System

CODE ID **F6DWT24SS2** +
F6UHK24DISH



S. STEEL BUILT-IN DISHWASHER 24"
with PROFESSIONAL HANDLE KIT

14 Place Settings
6 Programs
49 dB(A)
Super active drying
4 Foldable racks on upper basket
Flow-Through Heater
3 way Euro Filtering System

CODE ID **F4DWT24SS1** +
F6UHK24DISH



OVERLAY DISHWASHER 24"
with PROFESSIONAL HANDLE KIT

14 Place Settings
6 Programs
49 dB(A)
Super active drying
2 Foldable racks on upper basket
Flow-Through Heater
3 way Euro Filtering System

CODE ID **F4DWS24F11** +
F6UHK24DISH



OVERLAY DISHWASHER 24"
with PROFESSIONAL HANDLE KIT

14 Place Settings
6 Programs
49 dB(A)
Super active drying
2 Foldable racks on upper basket
Flow-Through Heater
3 way Euro Filtering System

CODE ID **F4DWT24F11** +
F6UHK24DISH

48" - 36" - 30" PROFESSIONAL RANGE - COLOR DOOR KITS



BLACK VELVET Matte Black - RAL 9004
48" PRO RANGE DOOR CODE ID **PDRKIT48MB**
36" PRO RANGE DOOR CODE ID **PDRKIT36MB**
30" PRO RANGE DOOR CODE ID **PDRKIT30MB**



GONDOLA BLACK Glossy Black - RAL 9004
48" PRO RANGE DOOR CODE ID **PDRKIT48BK**
36" PRO RANGE DOOR CODE ID **PDRKIT36BK**
30" PRO RANGE DOOR CODE ID **PDRKIT30BK**



RIALTO GREY Matte Grey - RAL 9007 "Slate"
48" PRO RANGE DOOR CODE ID **PDRKIT48MG**
36" PRO RANGE DOOR CODE ID **PDRKIT36MG**
30" PRO RANGE DOOR CODE ID **PDRKIT30MG**



VENETIAN RED Glossy Red - RAL 3003
48" PRO RANGE DOOR CODE ID **PDRKIT48RD**
36" PRO RANGE DOOR CODE ID **PDRKIT36RD**
30" PRO RANGE DOOR CODE ID **PDRKIT30RD**



CANOVA WHITE Matte White - RAL 9016
48" PRO RANGE DOOR CODE ID **PDRKIT48MW**
36" PRO RANGE DOOR CODE ID **PDRKIT36MW**
30" PRO RANGE DOOR CODE ID **PDRKIT30MW**



PALLADIO WHITE Glossy White - RAL 9016
48" PRO RANGE DOOR CODE ID **PDRKIT48WH**
36" PRO RANGE DOOR CODE ID **PDRKIT36WH**
30" PRO RANGE DOOR CODE ID **PDRKIT30WH**

SOFIA PROFESSIONAL OPTIONAL ACCESSORIES

30" PRO DOUBLE OVEN - COLOR DOOR KITS



BLACK VELVET Matte Black - RAL 9004
 30" Pro Upper Door CODE ID **PODKIT30MB**
 30" Pro Range Lower Door CODE ID **PDRKIT30MB**



GONDOLA BLACK Glossy Black - RAL 9004
 30" Pro Upper Door CODE ID **PODKIT30BK**
 30" Pro Range Lower Door CODE ID **PDRKIT30BK**



RIALTO GREY Matte Grey - RAL 9007 "Slate"
 30" Pro Upper Door CODE ID **PODKIT30MG**
 30" Pro Range Lower Door CODE ID **PDRKIT30MG**



VENETIAN RED Glossy Red - RAL 3003
 30" Pro Upper Door CODE ID **PODKIT30RD**
 30" Pro Range Lower Door CODE ID **PDRKIT30RD**



CANOVA WHITE Matte White - RAL 9016
 30" Pro Upper Door CODE ID **PODKIT30MW**
 30" Pro Range Lower Door CODE ID **PDRKIT30MW**



PALLADIO WHITE Glossy White - RAL 9016
 30" Pro Upper Door CODE ID **PODKIT30WH**
 30" Pro Range Lower Door CODE ID **PDRKIT30WH**

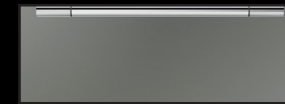
30" WARMING DRAWERS - COLOUR KIT



30" Warming drawers CODE ID **PWDKIT30MB**
BLACK VELVE Matte Black - RAL 9004



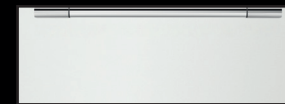
30" Warming Drawers CODE ID **PWDKIT30BK**
GONDOLA BLACK Glossy Black - RAL 9004



30" Warming Drawers CODE ID **PWDKIT30MG**
RIALTO GREY Matte Grey - RAL 9007 "Slate"



30" Warming Drawers CODE ID **PWDKIT30RD**
VENETIAN RED Glossy Red - RAL 3003

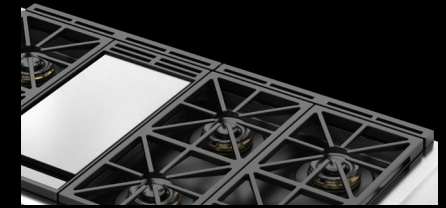
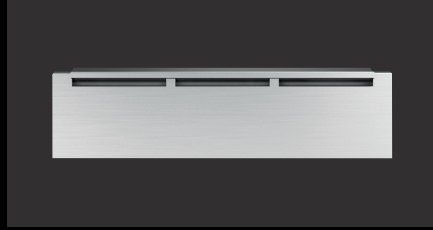
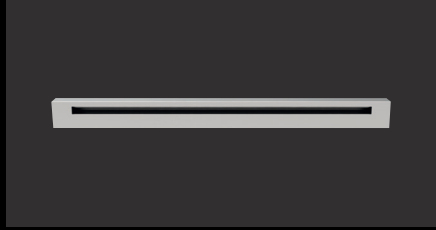


30" Warming Drawers CODE ID **PWDKIT30MW**
CANOVA WHITE Matte White - RAL 9016



30" Warming Drawers CODE ID **PWDKIT30WH**
PALLADIO WHITE Glossy White - RAL 9016

SOFIA PROFESSIONAL OPTIONAL ACCESSORIES



PROFESSIONAL STAINLESS BACK GUARD TRIM

- 48" Back Guard - 3" Standard Trim CODE ID **F6BG48STD**
- 36" Back Guard - 3" Standard Trim CODE ID **F6BG36STD**
- 30" Back Guard - 3" Standard Trim CODE ID **F6BG30STD**

PROFESSIONAL STAINLESS BACK GUARD TRIM

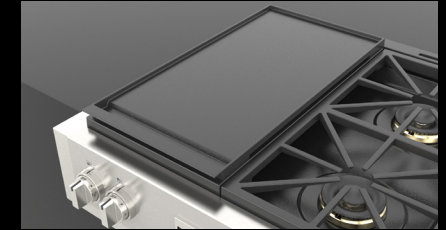
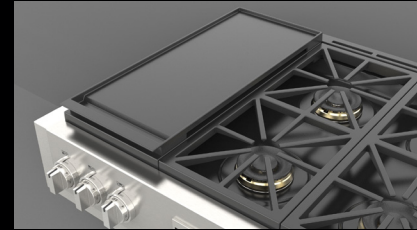
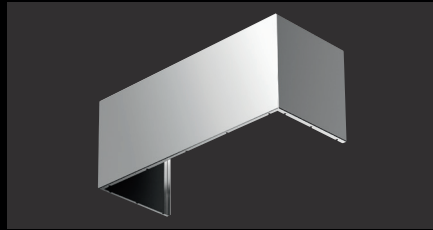
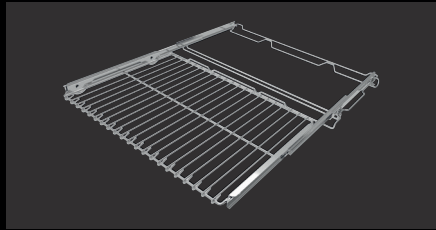
- 48" Back Guard - High Back Trim CODE ID **F6BG48HBT**
- 36" Back Guard - High Back Trim CODE ID **F6BG36HBT**
- 30" Back Guard - High Back Trim CODE ID **F6BG30HBT**

ISLAND TRIM

- 36" Stainless Steel - 1" High CODE ID **F6BG36ISL**
- 30" Stainless Steel - 1" High CODE ID **F6BG30ISL**

ISLAND TRIM

- 48" Black Cast Iron - Island Trim CODE ID **F6BG48BCI**
- 36" Black Cast Iron - Island Trim CODE ID **F6BG36BCI**
- 30" Black Cast Iron - Island Trim CODE ID **F6BG30HBT**



PROFESSIONAL OVEN

- 36" Telescopic rack CODE ID **FMTRP36**
- 30" Telescopic rack CODE ID **FMTRP30**
- 18" Telescopic rack CODE ID **FMTRP18**

CHIMNEY COVER

- 48" For model F6PH48S1 12" high CODE ID **F6CK48-12**
- 36" For model F6PH36S1 12" high CODE ID **F6CK36-12**
- 30" For model F6PH30S1 12" high CODE ID **F6CK30-12**

CAST-IRON GRIDDLE

- 36" Heavy Duty Enameled griddle CODE ID **FMGRID36**

CAST-IRON GRIDDLE

- 30" Heavy Duty Enameled griddle CODE ID **FMGRID30**



CHARCOAL FILTERS

For recirculating installations

CODE ID **FMFIL**

WOK RING

For best results with a wok, use this accessory with high-BTU burner specifically creacted for wok cooking.

CODE ID **FMWOK**

SIMMER PLATE

The cast-iron simmer plate provides a steady simmer temperature, evenly distributed across a stable heating surface.

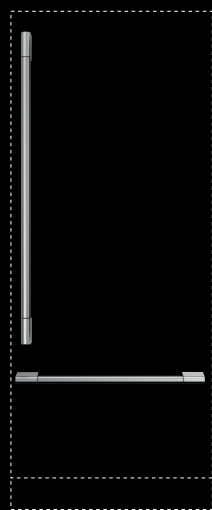
CODE ID **FMSIM**



SOFIA PRO WINE CELLAR HANDLE KIT

Pro Handle Kit for overlay Wine Cellar

CODE ID **REFHANDPRO24**



SOFIA PRO FRIDGE HANDLE KIT

Pro Handle Kit for overlay Fridge

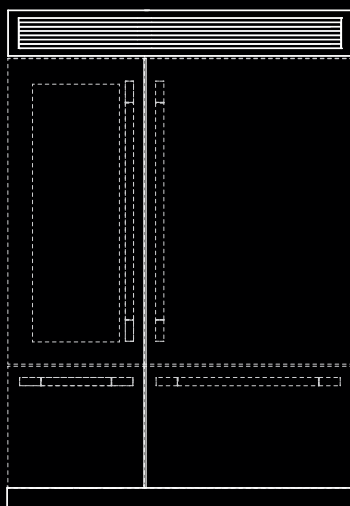
CODE ID **REFHANDPRO36**



PRO FRENCH DOOR FRIDGE HANDLE KIT

Pro Handle Kit for French Door Fridge

CODE ID **F6HK36FFBS**



24-36" PRO FRIDGE | WINE CELLAR INST. KIT

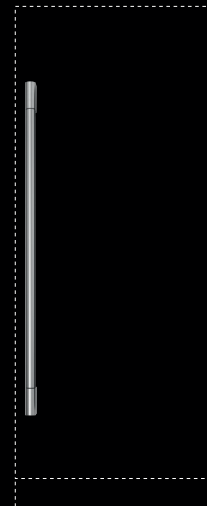
Top Grate, Toe Kick, Vert. Gasket Strip and Insulation Panel

CODE ID **REFSBSPRO60**



24-36" BUILT-IN FRIDGE | WINE CELLAR INST. KIT

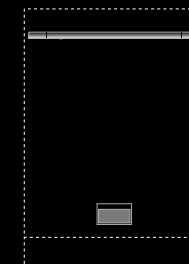
CODE ID **REFSBSINT60**



SOFIA PRO COLUMNS FRIDGE HANDLE KIT

Pro Handle Kit for overlay columns products

CODE ID **REFHANDPROCOL**



PRO DISHWASHER HANDLE KIT

Pro Handle Kit for Dishwasher

CODE ID **F6UHK24DISH**

FULGOR
MILANO

ACCENTO PRO RANGE

Inspired by traditional professional styling, our Accento Professional Range features a classic bullnose design over elegant yet prominent knob controls. You can create the ultimate color expression with the Accento Professional Range color kits. Newly designed continuous cast iron grids offer a sturdy surface, ensuring professional performance and optimal thermal dynamics.



The handcrafted Accento Range with its traditional bullnose is the perfect replacement range. Its beautiful one-piece matte black porcelain burner bowl allows for easy cleaning. The matte black is an ideal complement to the grates and burner caps. Accentuate the satin stainless steel finish of the Accento Range with your chosen color kit.

ACCENTO

STYLE DETAILS

The beautiful Accento Range is ready for the red carpet. No detail was overlooked, from the sculpted handle's lines and grates to the symmetry from top to bottom. Adding an "accent" of color to the Accento Range has never been easier than with Fulgor Milano's unique color kit system. Each color kit has a matching door, toe kick and control panel accent trim, providing endless mix-and-match possibilities.





ACCENTO

A FRESH CONCEPT, INSPIRED BY TRADITION

The Accento Professional Range line is designed to offer exceptional performance and value. Accento has the build quality and attention to detail our customers are accustomed to with all our professionally handcrafted products.



DUAL FUEL RANGE 36"

One piece, matte finish porcelain burner bowl
 3 Dual-Flame Crescendo Burners
 3 X 18,000 BTU max (NG)
 3 Rapid Burners
 3 X 15,000 BTU max(NG)
 Dual True Convection
 Self-cleaning oven with Multifunction baking
 Black Porcelain enamel interior
 Cool to the touch door (4 Heat Resistant Glasses)
 Gross capacity 5.7 cu. ft.
 Enameled Broiler Pan

CODE ID **F4PDF366S1**



ALL GAS RANGE 36"

3 Heavy Duty, continuous cast iron grates
 One piece, matte finish porcelain burner bowl
 3 Dual-Flame Crescendo Burners
 3 X 18,000 BTU max (NG)
 3 Rapid Burners
 3 X 15,000 BTU max (NG)
 Dual Convection
 Black Porcelain enamel interior
 Cool to touch door (4 Heat Resistant Glasses)
 Gross capacity 5.7 cu. ft.
 Enameled Grill set

CODE ID **F4PGR366S2**



DUAL FUEL RANGE 30"

One piece, matte finish porcelain burner bowl
 2 Dual-Flame Crescendo Burners
 2 X 18,000 BTU max (NG)
 2 Rapid Burners
 2 X 15,000 BTU max (NG)
 Dual True Convection
 Self-cleaning oven with Multifunction baking
 Black Porcelain enamel interior
 Cool to the touch door (4 Heat Resistant Glasses)
 Gross capacity 4.4 cu. ft.
 Enameled Broiler Pan

CODE ID **F4PDF304S1**



ALL GAS RANGE 30"

2 Heavy Duty, continuous cast iron grates
 One piece, matte finish porcelain burner bowl
 2 Dual-Flame Crescendo Burners
 2 X 18,000 BTU max (NG)
 2 Rapid Burners
 2 X 15,000 BTU max (NG)
 Dual Convection
 Black Porcelain enamel interior
 Cool to touch door (4 Heat Resistant Glasses)
 Gross capacity 4.4 cu. ft.
 Enameled Grill set

CODE ID **F4PGR304S2**

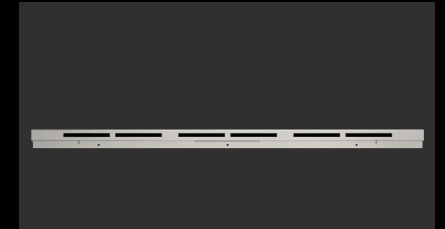
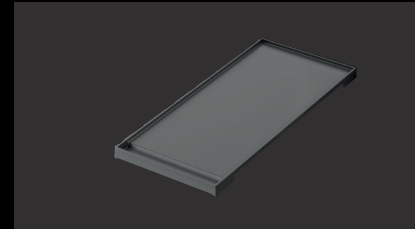
ACCENTO OPTIONAL ACCESSORIES

36" - 30" PROFESSIONAL RANGE - COLOR DOOR KITS



BLACK VELVET Matte Black - RAL 9004
36" RANGE CODE ID **ACDKIT36MB**

BLACK VELVET Matte Black - RAL 9004
30" RANGE CODE ID **ACDKIT30MB**



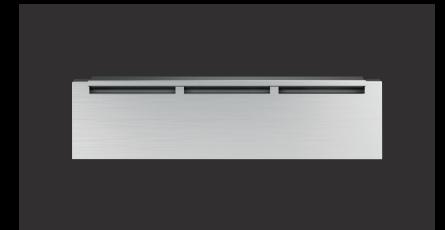
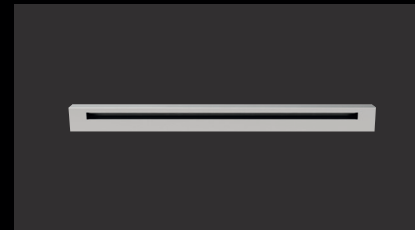
CAST-IRON GRIDDLE
36" Heavy Duty Enameled griddle CODE ID **FMGRID36**
30" Heavy Duty Enameled griddle CODE ID **FMGRID30**

ISLAND TRIM
36" Stainless Steel - 1" High CODE ID **F6BG36ISL**
30" Stainless Steel - 1" High CODE ID **F6BG30ISL**



CANOVA WHITE Matte White - RAL 9016
36" RANGE CODE ID **ACDKIT36MW**

CANOVA WHITE Matte White - RAL 9016
30" RANGE CODE ID **ACDKIT30MW**



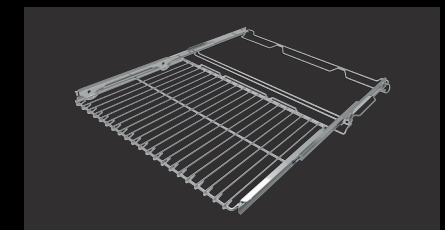
PROFESSIONAL STAINLESS BACK GUARD TRIM
36" Back Guard - 3" Standard Trim CODE ID **F6BG36STD**
30" Back Guard - 3" Standard Trim CODE ID **F6BG30STD**

PROFESSIONAL STAINLESS BACK GUARD TRIM
36" Back Guard - High Back Trim CODE ID **F6BG36HBT**
30" Back Guard - High Back Trim CODE ID **F6BG30HBT**



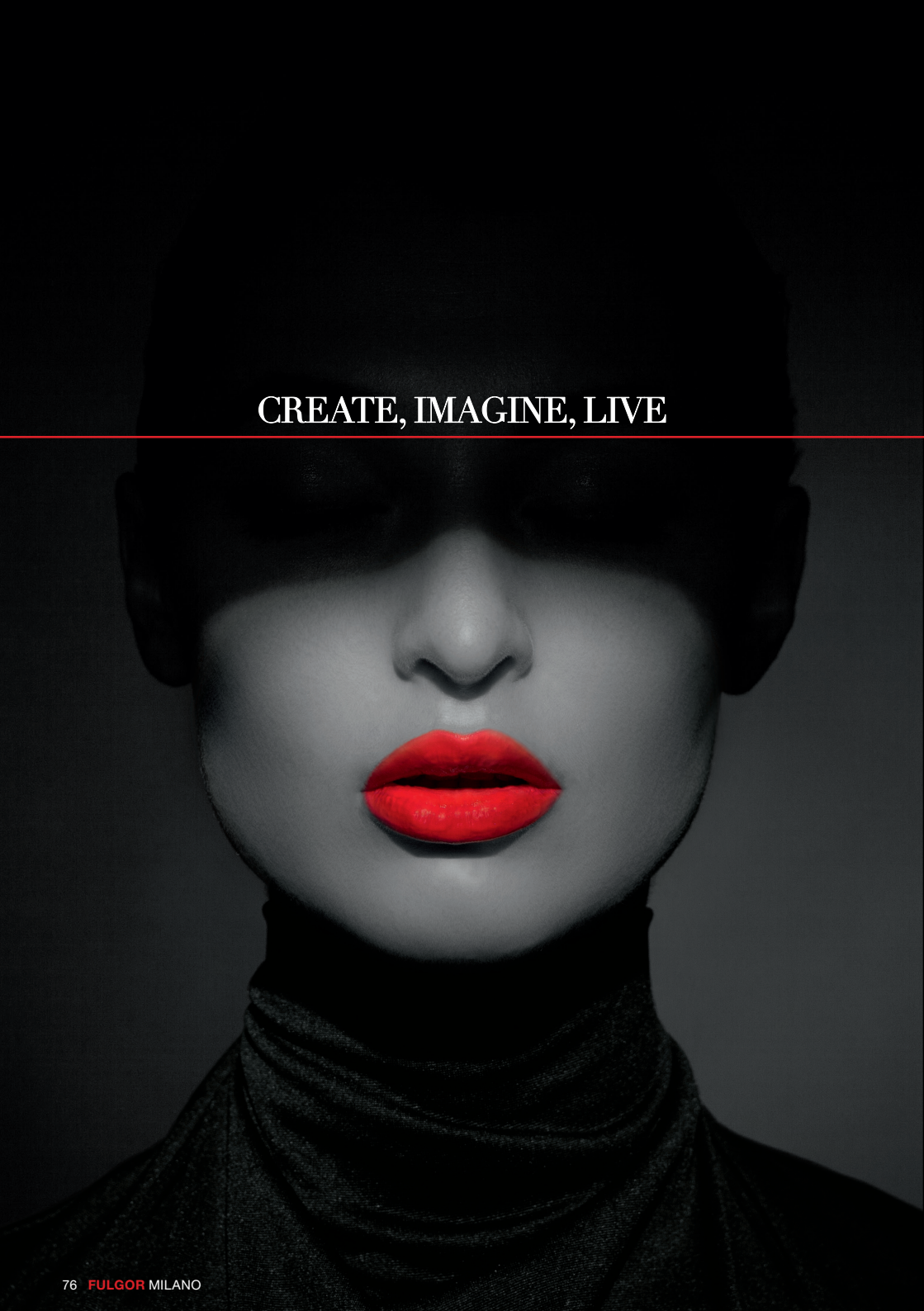
VENETIAN RED Glossy Red - RAL 3003
36" RANGE CODE ID **ACDKIT36RD**

VENETIAN RED Glossy Red - RAL 3003
30" RANGE CODE ID **ACDKIT30RD**



WOK RING
Use this accessory with high-BTUs burner.
CODE ID **FMWOK**

PROFESSIONAL OVEN
36" Telescopic rack CODE ID **FMTRP36**
30" Telescopic rack CODE ID **FMTRP30**



CREATE, IMAGINE, LIVE

FULGOR
MILANO

DISTINTO

LINE

This powerful line of distinctive products features modularity and linear stroke. Like a chef who moves quickly and gracefully in the kitchen, intuitive displays allow simple recall of recipes and specialty foods you love to make.

These ovens' functionality matches our modern lifestyle, effortlessly letting us make the most of our culinary creations. This new standard is the symbol of modernity created in Italy.

FULGOR
MILANO

Limited on space yet wanting an elevating cooking experience? The Distinto Compact Column is an excellent option that combines three exclusive cooking units in a single compact wall oven cabinet.

DISTINTO COMPACT COLUMN 24"



COMBI STEAM OVEN

Our Fulgor Milano 1.3 cu. ft. Built-In Combi Steam Oven provides a healthy alternative for cooking your favorite foods. Use the oven as a steam cooker, a full-function oven or a combination of steam and convection heat to achieve perfect results.

CONVECTION OVEN

The 24" Distinto Full Function Convection Oven is bigger than you think. It features our easy-to-use and intuitive touch controls. The convection oven perfectly complements the other 24" Distinto built-in cooking products.

WARMING DRAWER

The Distinto Compact Warming Drawer seamlessly integrates into your kitchen, making it the perfect complement.



24" COUNTER-TOP MICROWAVE

Round out your Fulgor Milano appliance package with our versatile built-in microwave and 30" trim kit. The two cu. Ft. capacity microwave features ten power levels, multiple cooking modes, a timer and sensors for reheating and defrosting.

The Fulgor Milano 24-inch counter-top microwave, with its stainless steel aesthetics, is the perfect choice for a modern style kitchen and matches perfectly with our other stainless steel appliances. It has a cavity size of 2.0 cu.ft and output power of 1100 W.

For a built-in installation, it's available a 30" trim kit.



MICROWAVES

With its stainless steel aesthetics, the Fulgor Milano Microwave is the perfect choice for a modern-style kitchen. Every aspect of these products is designed to reflect the elegance and uniqueness of Italian style.



24" DRAWER MICROWAVE

This built-in microwave drawer has an elegant design for the glass and hidden controls. The 1.2 cu. Ft. drawer is tall enough for an average 20 oz. cup and can accommodate a four qt. casserole dish. The drawer can be installed in an island or below a wall oven in a flush install without impacting the built-in venting.



FULGOR
MILANO

DISTINTO

COFFEE MACHINE

Our built-in coffee machine is your personal barista; from storing coffee beans and grinding fresh beans for brewing, to automatically storing puck-grounds in the waste bin.

Enjoy barista-style coffee at home, from espresso and cappuccinos, to your favorite Americano at the touch of a button. This made in Italy, professional quality coffee machine is easy to use and the perfect complement to your Fulgor Milano Italian cooking products.



30" Distinto style Frame kit is available. This unique frame kit allows our unit to be installed in combination with our other 30" built-in Distinto products.



Shown in the above image is our unique low profile Distinto trim kit. This accessory allows our built-in coffee machine to be installed over our other Distinto built-in products, for a seamless look.



Our coffee machine is also available in a black glass finish. The 24" Distinto built-in coffee machine allows for a smaller footprint when installed on its own.



FULGOR
MILANO

DISTINTO CHIMNEY WALL HOODS

Fulgor Milano now has an elegant pyramid-style chimney wall hood featuring the same quality and finish you expect. Like all our products, this stylish vent hood powerfully extracts air, featuring baffle-style filters. Both hoods are available in 30" and 36" widths, with 600 CFM performance. It also offers a power damping system to meet local code requirements, lowering CFMs if needed.





SINGLE OVEN 30"

Creative Touch Control System
Dual True Convection
Self-cleaning oven (Multif. baking)
Black Porcelain enamel interior
Cool to the touch
Gross capacity 4.4 cu. ft.

Stainless Steel
CODE ID **F7SP30S1**



Black Glass
CODE ID **F7SP30B1**



White Glass
CODE ID **F7SP30W1**



WARMING DRAWER 30"

S. Steel Door - Knob Control
Heavy Duty full extendable telescopic rails
Large capacity 2,1 cu. ft.
Convection heating system
Warming Temperature range; 86 °F/190 °F
Push-Pull system to open and close door

CODE ID **F7DWD30S1**



COMBI SPEED OVEN 30"

3 in 1 Oven - Microwave,
Convection, and Combination
True Convection
Stainless Interior with broiler
Quick Access Menu
Automatic Programs
240 Volt Connection

CODE ID **F7DSPD30S1**



COMBI SPEED OVEN 24"

3 in 1 Oven - Microwave,
Convection, and Combination
True Convection
Stainless Interior with broiler
Quick Access Menu
Automatic Programs
240 Volt Connection

CODE ID **F7DSPD24S1**



SELF-CLEANING OVEN 24"

15 cooking modes
Automatic cooking
True Convection
Sabbath mode
BOOST to rapidly reach the
pre-selected temperature
PYROLYSIS Self-cleaning

CODE ID **F7SP24S1**



DOUBLE OVEN 30"

Creative Touch Control System
Dual True Convection
Self-cleaning oven (Multif. baking)
Black Porcelain enamel interior
Cool to the touch
Gross capacity 4.4 cu. ft.

Stainless Steel
CODE ID **F7DP30S1**



Black Glass
CODE ID **F7DP30B1**



White Glass
CODE ID **F7DP30W1**



WARMING DRAWER 30"

Overlay Panel - Knob Control
Heavy Duty full extendable telescopic rails
Large capacity 2,1 cu. ft.
Convection heating system
Warming Temperature range; 86 °F/190 °F
Push-Pull system to open and close door

CODE ID **F7IWD30O1**



BUILT-IN COFFEE MACHINE 30"

30" Distinto Style Frame Kit
Whole Bean Coffee Grinder
Dual Boiler, Dual Dispensing Spouts
Coffee/Esspresso Brewing
Cappuccino Option
Frothing System / Hot Water Dispenser

CODE ID **F7BC24B1 + F7DTK30BC**



BUILT-IN COFFEE-MACHINE 24"

Whole Bean Coffee Grinder
Dual Boiler, Dual Dispensing Spouts
Coffee/Esspresso Brewing
Cappuccino Option
Frothing System
Hot Water Dispenser

CODE ID **F7BC24S1**



BLACK GLASS 24"

Whole Bean Coffee Grinder
Dual Boiler, Dual Dispensing Spouts
Coffee/Esspresso Brewing
Cappuccino Option
Frothing System
Hot Water Dispenser

CODE ID **F7BC24B1**



COMBI STEAM OVEN 30"

CREACTIVE operating system
Magnetic water filter
True Convection
Stainless steel interior
Internal capacity 1.2 cu.ft (34 litres)
Cool to the Touch Door
Double Control panel (with lock key)

CODE ID **F7DSCO30S1**



COMBI STEAM OVEN 24"

CREACTIVE operating system
Magnetic water filter
True Convection
Stainless steel interior
Internal capacity 1.2 cu.ft (34 litres)
Stainless Steel Trim Frame 30" Optional
(code ID F7TDK30SO)

CODE ID **F7SCO24S1**



WARMING DRAWER 24"

S. Steel Door
Knob Control
Heavy Duty full extendable telescopic rails
Convection heating system
Warming Temperature range; 86 °F/190 °F
Push-Pull system to open and close door

CODE ID **F4DWD24S1**



DRAWER MW 24"

Stainless steel design
Modern edge-to-edge black glass
LED interior lighting
Touch glass control
Built-in airflow control for flush mounting

CODE ID **F7DMW24S2**



COUNTER-TOP MW 24"

11 Power Levels
Electronic Touch Control
Super Defrost
Sensor Cook Menu
Auto Start
Child Lock

CODE ID **F4MWO24S1**



INDUCTION COOKTOP 36"

- 5 Induction cooking zones
- One 11" large zone
- Bridge zone on the right side
- A subtle elegant aluminum trim
- Elegant Ceramic glass surface
- Melt and Simmering Functions
- Residual heat led
- Digital Minute Minder

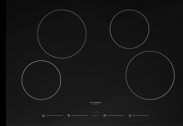
CODE ID **F7IT36S1**



INDUCTION COOKTOP 30"

- 4 Induction cooking zones
- One 11" large zone
- Premium Induction Technology
- A subtle elegant aluminum trim
- Elegant Ceramic glass surface
- Melt and Simmering Functions
- Residual heat led
- Digital Minute Minder

CODE ID **F7IT30S1**



INDUCTION COOKTOP 30"

- 4 Induction cooking zones
- Performance Induction Technology
- Durable Ceramic glass surface
- Residual heat led
- Power On Indicators
- Digital Minute Minder

CODE ID **F4IT30S2**



INDUCTION COOKTOP 24"

- 4 Induction cooking zones
- Performance Induction Technology
- Durable Ceramic glass surface
- Residual heat led
- Power On Indicators
- Digital Minute Minder

CODE ID **F4IT24S2**



FRENCH DOOR FRIDGE 36"
with **DISTINTO HANDLE KIT**

- Duo Cycling Cooling
- Ion Fresh
- Inner Digital Display, Sabbath Mode
- Large Pantry Drawer
- Height Adjustable Cantilever Shelves
- Interior Filtered Water Dispenser
- Interior Theatre Lighting with LED lights
- Automatic Ice Machine

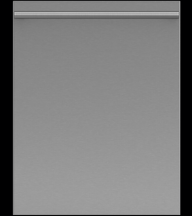
CODE ID **F6FBM36S2+**
F7HK36FFBS



S. STEEL DISHWASHER 24"
with **DISTINTO HANDLE KIT**

- 16 Place Settings
- 6 Programs
- 45 dBA Silent Operations
- Flexible Rack Loading
- Single tablet Detergent Function
- Fast Function, 5 Level Wash
- Flow Through Heater
- 3 way Euro Filtering System

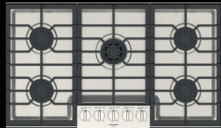
CODE ID **F6DWT24SS2+**
F7HK24DISHS



S. STEEL DISHWASHER 24"
with **DISTINTO HANDLE KIT**

- 14 Place Settings
- 6 Programs
- 49 dBA
- Super active drying
- 4 Foldable racks on upper basket
- Flow Through Heater
- 3 way Euro Filtering System

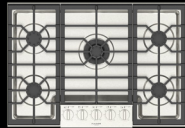
CODE ID **F4DWT24SS1+**
F7HK24DISHS



GAS COOKTOP 36"

- 3 Heavy duty continuous cast iron grates
- Heavy Gauge 304 Stainless Steel Burner Bowl
- 1 Aluminum Dual Flame Burner
- 2 Aluminum Stacked Burners
- 1 Aluminum Rapid Burners
- 1 Aluminum Semirapid Burners

CODE ID **F4PGK36S1**



GAS COOKTOP 30"

- 3 Heavy duty continuous cast iron grates
- Heavy Gauge 304 Stainless Steel Burner Bowl
- 1 Aluminum Dual Flame Burner 20K BTU Max (NG)
- 2 Aluminum Semirapid Burners 8K BTU Max (NG)
- 2 Aluminum Semirapid Burners 6.3K BTU Max (NG)

CODE ID **F4PGK30S2**



CHIMNEY WALL HOOD 36"

- Scotch Brite Stainless Steel (AISI 430)
- Electronic Control
- Motor 600 CFM
- Baffle Filter
- 2 LED lighting

CODE ID **F4CW36S1**



CHIMNEY WALL HOOD 30"

- Scotch Brite Stainless Steel (AISI 430)
- Electronic Control
- Motor 600 CFM
- Baffle Filter
- 2 LED lighting

CODE ID **F4CW30S1**



OVERLAY DISHWASHER 24"
with **DISTINTO HANDLE KIT**

- 14 Place Settings
- 6 Programs
- 49 dB(A)
- Super active drying
- 2 Foldable racks on upper basket
- Flow-Through Heater
- 3 way Euro Filtering System

CODE ID **F4DWT24F11+**
F7UHK24DISH



OVERLAY DISHWASHER 24"
with **DISTINTO HANDLE KIT**

- 14 Place Settings
- 6 Programs
- 49 dB(A)
- Super active drying
- 2 Foldable racks on upper basket
- Flow-Through Heater
- 3 way Euro Filtering System

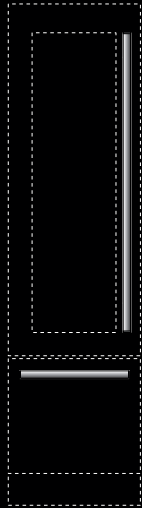
CODE ID **F4DWS24F11+**
F7UHK24DISH



OVERLAY DISHWASHER 18"

- 10 Place Settings
- 6 Programs
- 49 dB(A)
- Super active drying
- 2 Foldable racks on upper basket
- Flow-Through Heater
- 3 way Euro Filtering System

CODE ID **F4DWS18F11**



DISTINTO WINE CELLAR HANDLE KIT

Distinto Handle Kit
Overlay Wine Cellar

CODE ID **REFHANDIS24**



DISTINTO FRIDGE HANDLE KIT

Distinto Handle Kit
Overlay Fridge

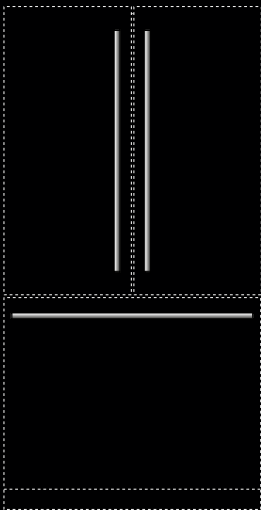
CODE ID **REFHANDIS36**



DISTINTO COLUMNS HANDLE KIT

Distinto Handle Kit
Overlay columns products

CODE ID **REFHANDISCOL**



DISTINTO FRENCH DOOR FRIDGE HANDLE KIT

Distinto Handle Kit
French Door Fridge

CODE ID **F7HK36FFBS**



DISTINTO DW HANDLE KIT

Distinto Handle Kit
Dishwasher

CODE ID **F7UHK24DISH**



UGO MARINELLO

IDA Award winning designer Ugo Marinello is passionate about his work and his desire to synthesize modern rationality with traditional design.

A graduate of IUAV in Venice, he draws inspiration from the unique architecture of that city, using it as a foundation to bring innovative yet timeless design and quintessential Italian spirit to your home and kitchen throughout the Fulgor Milano line.



ALFRED HENDRICKX

Known internationally for his mid-century furniture collections, designer Alfred Hendrickx began incorporating the strong lines of industrial styling and materials like stainless steel early in his career. After many successful design collaborations in Europe, he turned his attention to the design of household appliances, notably marrying modern form and function for Meneghetti and Fulgor Milano.

Every effort is made to ensure the information in this catalog is accurate at the time of publication. For the most up-to-date information of any of the products or accessories in this catalog, please visit www.fulgor-milano.us Meneghetti S.p.a. reserves the right to make updates to the information and products or discontinue models contained in this catalog without notice

FULGOR
MILANO

A FAMILY A PASSION



There are few places in the world where food has been the backbone of a culture like it has been in Italy for centuries. A passion for cooking, creating, and using local ingredients has inspired generations of Italian families, making the kitchen the heart of the home. The aroma flowing from long hours of food preparation, tables filled with recipes handed down from generation to generation, and the perfect local wines are moments that stay with us forever, even when we are far away. This is what being Italian is all about. The Meneghetti Family brought us the Fulgor Milano line of products so that we are inspired to cook and create with this same passion at home. Every Fulgor Milano product has been designed and developed to meet or exceed performance and quality expectations and provide a uniquely Italian design.

MORE INFO



www.fulgor-milano.com - info@fulgor-milano.com

Every effort is made to ensure the information in this catalog is accurate at the time of publication.
For the most up-to-date information of any of the products or accessories in this catalog, please visit www.fulgor-milano.us
Meneghetti S.p.a. reserves the right to make updates to the information and products or discontinue models contained in this catalog without notice